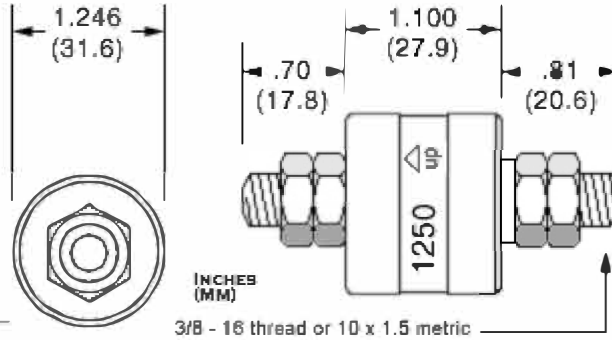


Model 1250

One Conductor,
250 Amp



4 nuts included

[Boot Kit](#) available

Available in metric thread (1250-M / 1250-MS / 1250-MSX)

Available with stainless steel ball bearing (1250-SS / 1250-MS) (recommended for wet or corrosive environments)

Available with stainless steel body and bearing (1250-SX / 1250-MSX) (recommended for wet or corrosive environments)

Mercotac model 1250 series are ideal connectors for high-power applications such as on plating electrodes and welding cable reels.

Model No.	Terminals	Voltage AC/DC	Max Amp Rating	Max. Freq. MHz	Contact Resistance	Max. RPM	Temp Max. F (C) / Min. F (C)	Rotation Torque (gm-cm)	Circuit Separation
1250	1	N/A	250	200	<1m Ω	1200	140 (60) / -20(-29)	250	N/A
1250-SS	1	N/A	250	200	<1m Ω	1200	140 (60) / -20(-29)	250	N/A
1250-M	1	N/A	250	200	<1m Ω	1200	140 (60) / -20(-29)	250	N/A
1250-MS	1	N/A	250	200	<1m Ω	1200	140 (60) / -20(-29)	250	N/A
1250-SX	1	N/A	250	200	<1m Ω	1200	140 (60) / -20(-29)	250	N/A
1250-MSX	1	N/A	250	200	<1m Ω	1200	140 (60) / -20(-29)	250	N/A

"SS" designator indicates stainless steel ball bearing

"M" designator indicates metric thread (M10 x 1.5)

"MS" designator indicates metric thread & stainless steel ball bearing

"SX" designator indicates stainless steel body & bearing

"MSX" designator indicates metric thread & stainless steel body & bearing

Note: The housing of the 1250 series Mercotac connector (anodized aluminum or stainless steel) is electrically "hot" to the internal conductor.

▼ Model 1250 Accessories



57125

[Boot Kit](#) for dust and splash protection
IP51

▼ Model 1250 Connections

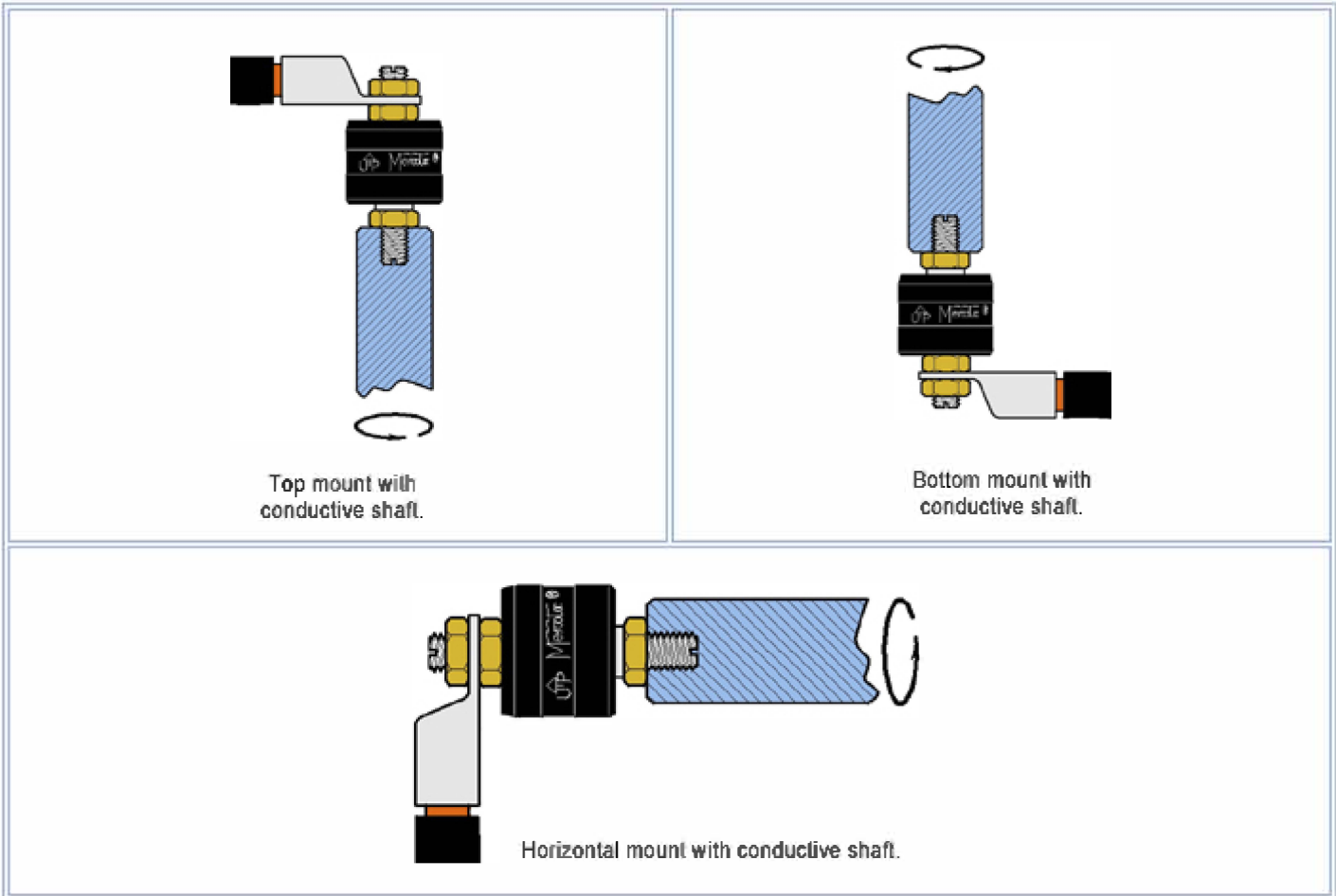


▼ Model 1250 Suggested Mounting Methods

Model 1250 is typically mounted by the threaded stud on either end or by the black body using a set screw. When mounting

horizontally, mount the Mercotac so the body of the connector rotates.

MODEL	Typical Body Mount Dimensions	DEPTH
1250, et al	HOLE DIAMETER (Ø) * 1.248" (31.70)	.80" (20.0)
	Typical Threaded Contact Mount	
1250 (inch)	3/8 - 16 UNC	.70" (17.8)
1250-M (metric)	M10 X 1.5	.70" (17.8)
*Inch (mm) Tolerance Ø	+ .001" (+.025) - .000" (-.000)	



Installation Notes:

- the up arrow should not point below horizontal
- do not solder to or bend connector tabs
- avoid lateral forces and mechanical loads (overly stiff or tight wires)
- do not rigid mount both ends of connector
- limit mounting eccentricity (runout / wobble) to .005" (.13mm)
- provide overload protection within the circuit
- avoid vibration and bumping motions