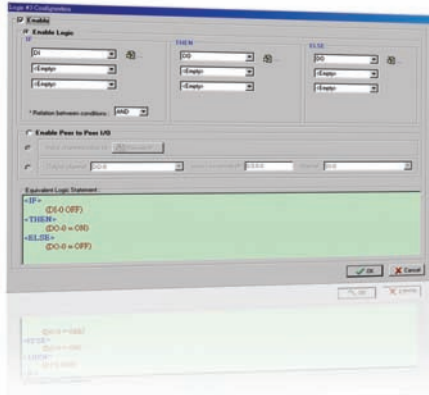


Click&Go

*Easy and intuitive I/O control configuration
for the ioLogik Active Ethernet I/O*



- PC-free solution with local intelligence
- Programming-free IF-THEN-ELSE logic reduces setup time
- Time stamped active alarm report with TCP, UDP, SNMP Trap, email, SMS, or CGI commands
- Time-based scheduler and timer control
- Input-to-output control over IP with peer-to-peer and remote action

Introduction

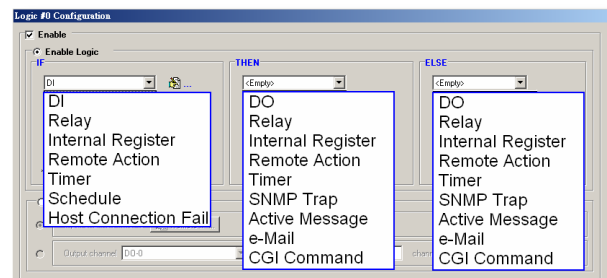
PC-free Alarm and Control Solution

Moxa's own Click&Go™ logic turns your ioLogik E2000, E4200, and W5340 remote I/O unit into a compact and powerful RTU by allowing you to configure basic input to output controls, even if users have no programming knowledge. Click&Go™ is such a powerful software solution that when used with the ioLogik series products, Click&Go

enables these remote I/O to have local control ability working without the control of a remote PC, or to keep operating when the remote PC or the network is down. Besides the basic local I/O control, alarm messages such as SNMP traps, TCP/UDP messages, e-mails and CGI commands can be triggered when there is an event.

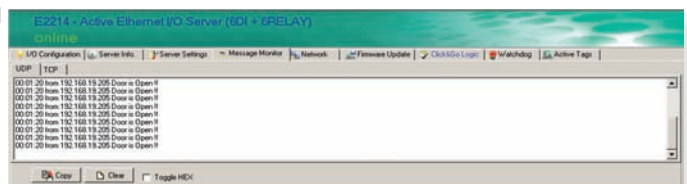
Set Up Your System with Just a Few Clicks

Click&Go™ is a programming-free function set solution that displays the control options you need in an easy to access drop-down menu. This means that you are never more than a few mouse clicks away from getting your system set up and ready to go without a compiler or a debugger. Click&Go's intuitive IF-THEN-ELSE logic shortens the learning curve and deployment time.



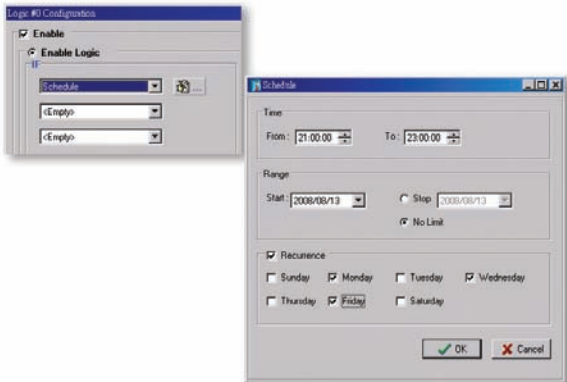
Active Alarm Reports Make Your Monitoring System Real-time

Click&Go™ is designed to provide a simple configuration platform and real-time monitoring capability. For any alarm system, fast response and real-time monitoring is very important. Click&Go™ supports various active communication methods, including TCP, UDP, SNMP Trap, email, and CGI commands, making it very easy to integrate Click&Go™ with any monitoring system. Click&Go™ also supports Sntp for time alignment, making sequential and historical alarm tracking possible. In addition, users can define the content of alarm messages themselves, making Click&Go™ a perfect solution for system users.

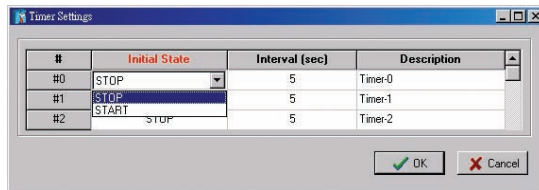


Click&Go™ Provides Time-based Scheduler and Timer Control

Click&Go™ can be scheduled to perform user defined tasks such as output control, remote actions, and active messaging. This function



is useful when applied to energy savings, lighting control, and water pumping systems. The timer function allows users to set a delay period for actions, which is particularly useful when used with alarm systems for which users need an authentication period to avoid false alarms.



Click&Go™ Function Comparison

Click&Go™ is now available on all ioLogik products, recent function improvements are shown in the table at the right.

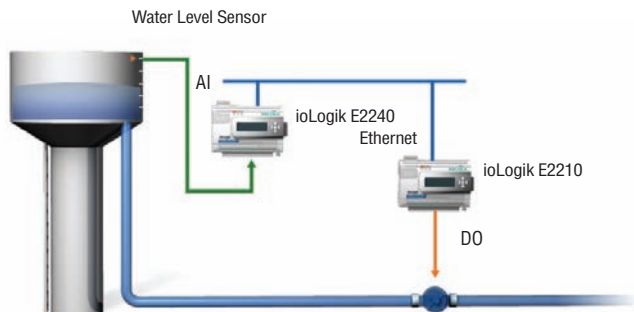
Improvements in Programming Method and Rules		
	Programming Method	Programming Rules
Click&Go V1.x	IF-THEN	16 Rules
Click&Go V2.x	IF-THEN-ELSE	24 Rules

Function Support			
	Click&Go V1.0	Click&Go V1.1	Click&Go V2.x
Input Monitor and Output Control	√	√	√
Counter Monitor and Reset	√	√	√
Timer Trigger	√	√	---
Delay Timer	---	√	---
Timer	---	---	√
Internal Register	---	√	√
Remote Action	---	---	√
Schedule	---	---	√
SNMP Trap	√	√	√
Active Messaging	√	√	√
Email	√	√	√
CGI Commands	---	---	√

Input-to-Output Control over IP Networks

Click&Go™ enables direct input-to-output control over IP networks, without the need for additional PCs. That is, when used in pairs, the ioLogik E2000 units can talk directly to each other, and digital inputs can be reproduced at a remote location over the network. Local analog inputs can also be referenced for remote digital outputs. A typical application can be found in water pumping systems where analog inputs that measure the water level are referenced to activate the pumps On/Off control. By cross referencing the scheduler, less energy will be used to operate the water pumping system.

Energy Savings for Water Pumping Systems



Click&Go™ Support Versions

To use the latest version of Click&Go™, simply upgrade the ioLogik's firmware. But first, be sure to download the latest configuration utility

before proceeding to update the firmware.

[illegible]